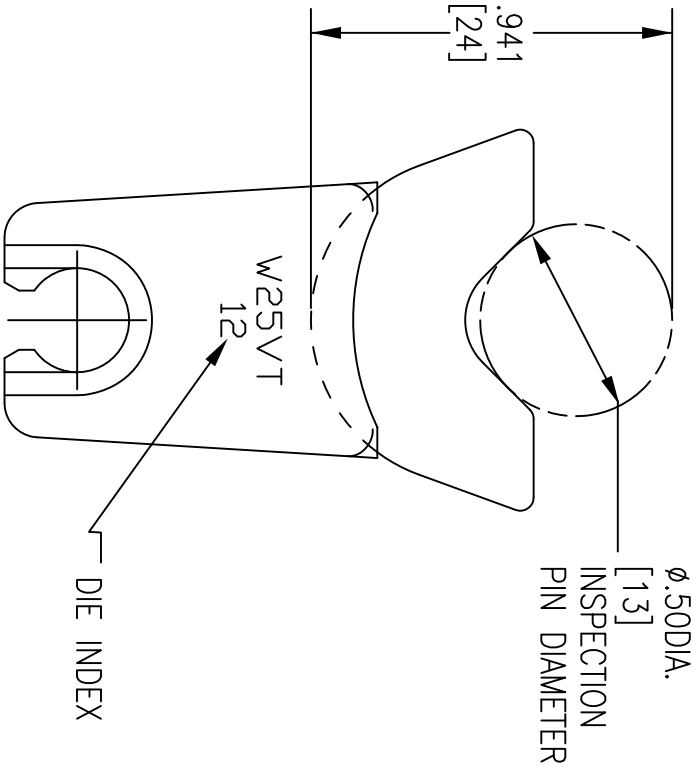
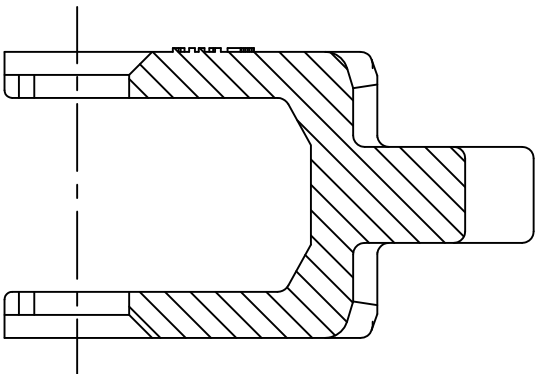
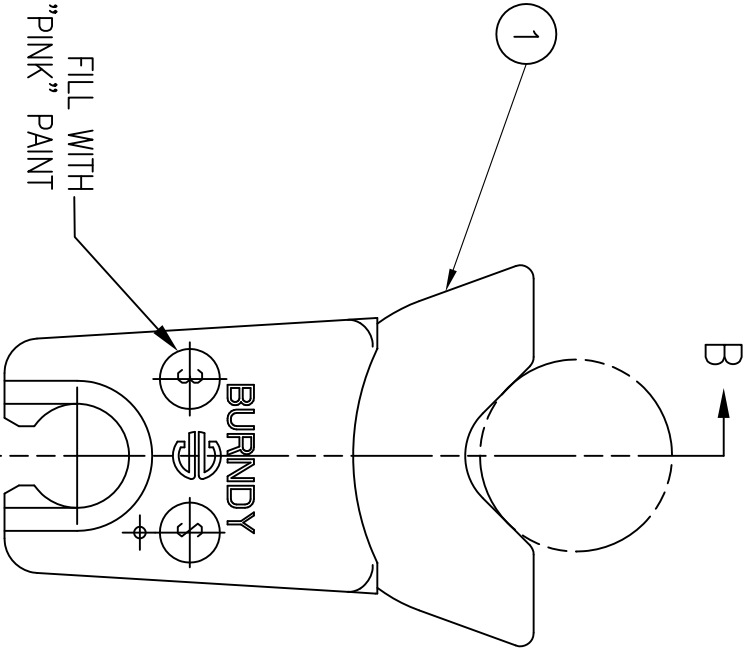
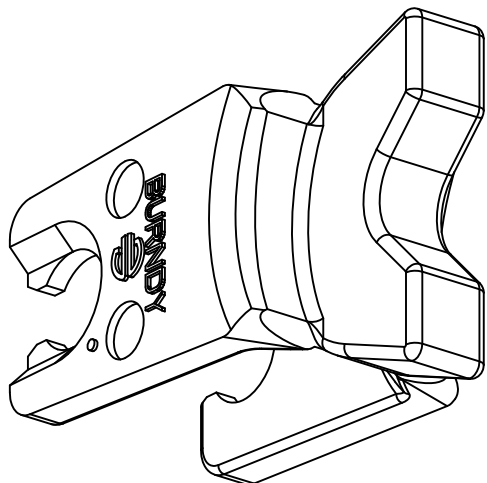


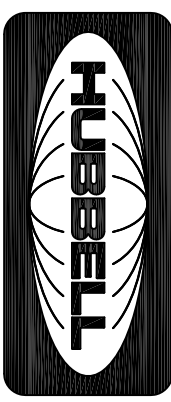
| 6        |  | 5                     |  | 4    |  | 3              |  | 2                     |  | 1 |  |
|----------|--|-----------------------|--|------|--|----------------|--|-----------------------|--|---|--|
| ITEM NO. |  | DESCRIPTION           |  | QTY. |  | CATALOG NUMBER |  | DESCRIPTION           |  |   |  |
| 1        |  | 1/0, 12 INDEX DIE SET |  | 1    |  | HW25VT         |  | 1/0, 12 INDEX DIE SET |  |   |  |



SECTION B-B



- NOTES:
- DIMENSIONS IN BRACKETS [ ] ARE IN MILLIMETERS ROUNDED OFF TO THE NEAREST MILLIMETER, UNLESS OTHERWISE NOTED, AND ARE FOR REFERENCE ONLY.
  - MATERIAL: STAINLESS STEEL
  - CATALOG NUMBER CONSIST OF TWO DIE HALVES.
  - FITS HPAT600LI AND HMD7 COMPRESSION TOOLS.
  - SPECIFICATIONS SUBJECT TO CHANGE WITHOUT NOTICE.

|   |  |       |  |  |  |                                     |  |   |  |
|---|--|-------|--|--|--|-------------------------------------|--|---|--|
| Created on AUTOCAD  |  |       |  | DIMENSIONING AND TOLERANCE PER<br>ANSI Y14.5M-1982<br>UNLESS OTHERWISE SPECIFIED,<br>DIMENSIONS ARE IN INCHES (MM).<br>TOLERANCES<br>XX = ±.01 (.25)<br>.XXX = ±.005 (.127)<br>.XXXX = ±.0025 (.0635)<br>ANGLE TOL ±1° |  | PROJECT REFERENCE:<br><br>2011-041  |  | <br><b>Hubbell Premise Wiring</b><br>HUBBELL INCORPORATED (Delaware)<br>23 CLARA DRIVE, SUITE 103 MYSTIC, CT 06355 |  |
| IN ACCEPTING OUR DRAWINGS,<br>BLUEPRINTS, OR SUPPORTING<br>DOCUMENTATION FOR QUOTATION<br>OR OTHER PURPOSES, YOU AGREE<br>NOT TO DISCLOSE TO OTHERS<br>THE IDEAS, INFORMATION, OR<br>DESIGNS SHOWN HEREIN, AND<br>THAT YOU WILL MAKE NO USE<br>OF SAME WITHOUT PERMISSION |  |       |  | MATERIAL:<br><br>SEE NOTES   |  | DRAWN BY:<br><br>C. GRIBBLE 8/13/12 |  | TITLE:<br><br>DIE SET, 1/0, 12 INDEX<br>W DIE SET FAMILY  |  |
| CHECKED BY:   |  |       |  |  |  | SIZE<br>DRAWING NO.                 |  | REV.  |  |
| APPROVED BY:  |  |       |  |  |  | C<br>HW514107C                      |  | 1   |  |
| SCALE:  |  |       |  | 1/1  |  | SHEET 1 OF 1                        |  |   |  |
| REV.  |  | ECN   |  | DATE   |  | CHG BY                              |  | APPD BY   |  |
| 1   |  | 17987 |  | 8/13/12  |  | CG                                  |  |   |  |
| INITIAL RELEASE   |  |       |  |  |  |                                     |  |   |  |
| DESCRIPTION   |  |       |  |  |  |                                     |  |   |  |